



외부 숙소 안내 가이드

OFF-CAMPUS HOUSING

A STEP-BY-STEP GUIDE FOR ARRANGING
OFF-CAMPUS HOUSING

(ENG)



PNU OIA



외부 숙소 안내 가이드

OFF-CAMPUS HOUSING

A STEP-BY-STEP GUIDE FOR ARRANGING
OFF-CAMPUS HOUSING



「 Notice 」

Due to the reduced housing capacity caused by the ongoing renovation of Hyowon Hall and the increase of international students, the number of available dormitory rooms remains significantly limited this semester as well. As a result, a considerable number of applicants may unfortunately not be selected for dormitory housing.

Accordingly, the Office of International Affairs would like to provide information to assist students in arranging safe and stable off-campus housing. Please carefully review the following information while preparing your housing arrangements.

Looking for accommodation just before the start of a new semester may make it difficult to find housing that matches your desired conditions. Therefore, if you are looking for an Off-Campus Housing, please prepare in advance and carefully arrange your accommodation as early as possible.

관련 문의 : idorm@pusan.ac.kr

The external housing agencies and websites included in this material are provided solely for information and reference and are not affiliated or partnered with the university. Off-campus housing contracts are entered into voluntarily at the student's own discretion and responsibility, and the university is not responsible for the contract process or any disputes, damages, or losses arising from it.



외부 숙소 안내 가이드

OFF-CAMPUS HOUSING

FINDING YOUR ACCOMODATION



CONTEXT

01

Global Real Estate Agencies

Housing support through real estate agencies designated by the Busan Metropolitan City Government, allowing international residents and students to conveniently and safely find accommodation with consultation available in English, Japanese, and Chinese

02

Searching Housing Listings via "Naver Real Estate"

Customized accommodation search using the Naver Real Estate search function with adjustable filtering conditions

03

"DiverCity House"

An online brokerage service platform tailored for international students, providing housing and settlement support solutions for foreigners : multilingual support for the entire process, from accommodation search to contract signing

04

"Plott LIFE"

Multilingual guidance services available, along with short-term housing options with low security deposit requirements

☆ Platform for searching short-term accommodation

05

Other Platforms

The external housing agencies and websites included in this material are provided solely for information and reference and are not affiliated or partnered with the university. Off-campus housing contracts are entered into voluntarily at the student's own discretion and responsibility, and the university is not responsible for the contract process or any disputes, damages, or losses arising from it.

외부 숙소 안내 가이드

OFF-CAMPUS HOUSING

A STEP-BY-STEP GUIDE FOR ARRANGING OFF-CAMPUS HOUSING



Global Real Estate Agency

Q. What is a Global Real Estate Agency?

A. Designated Global Real Estate Agencies are officially approved real estate offices that provide multilingual services(English, Japanese, and Chinese) to help international residents and students secure housing safely.

[Link for the Real Estate for Foreigners]

[\(click\) 글로벌중개사무소 지정 현황 : 부산광역시 분야별 통합](#)

* This link also provides which language(ENG/JAP/CHN) real-estate agencies can speak

[\(click\) Residents > Housing > Real Estate Agencies for Foreigners](#)

* This is an English translated link for foreigners, but unable to track which language agency can speak

| | | | | | |
|-----|-----|------------------------|-----|---------------------------------------|----------|
| 영어 | 금정구 | 래미안킹공인 중개사사무소 | 최서운 | 금정구 금정로 20, 206동 101호(장전동, 래미안장전) | 556-0099 |
| 영어 | 금정구 | 황금공인중개 사사무소 | 김홍림 | 금정구 금강로335번길 9 (장전동) | 582-1144 |
| 영어 | 금정구 | 금돈공인중개 사사무소 | 김보경 | 금정구 부산대학로 10, 상가1동 110호(부곡동, 부곡대우아파트) | 518-8289 |
| 영어 | 금정구 | 아이콘공인중 개사사무소 | 양창우 | 금정구 명서로 76, 108동 201호(서동, 삼한아파트) | - |
| 일본어 | 금정구 | 주식회사아시 아부동산중개 법인 | 박숙영 | 금정구 은천장로 145(장전동) | 518-6667 |
| 일본어 | 금정구 | 손영민공인중 개사사무소 | 손영민 | 금정구 동현로 17-1 (부곡동) | 756-1488 |
| 일본어 | 금정구 | 제일공인중개 사사무소 | 김선희 | 금정구 금정로 110-1(장전동) | 515-2006 |
| 중국어 | 금정구 | 삼성공인중개 사사무소 | 최홍화 | 금정구 서명로 1(서동) | 532-8939 |

- Students can also consider contacting agents in nearby areas, such as Dongnae-gu, depending on their preferences, conditions, and individual circumstances.
- We encourage you to refer to the information provided in the two links above when searching for accommodation that meets your personal needs.

[Contact Info]

부산시 120 콜센터 (지역번호 051)
평일 8:30 ~ 18:30



The external housing agencies and websites included in this material are provided solely for information and reference and are not affiliated or partnered with the university. Off-campus housing contracts are entered into voluntarily at the student's own discretion and responsibility, and the university is not responsible for the contract process or any disputes, damages, or losses arising from it.

외부 숙소 안내 가이드 OFF-CAMPUS HOUSING

A STEP-BY-STEP GUIDE FOR ARRANGING
OFF-CAMPUS HOUSING



Naver Real Estate

[\(CLICK\) Link for Naver Real Estate](#)

Q. 네이버 부동산을 활용한 매물 찾기

1) How to Access

Search for "Naver Real Estate" on Naver
Or open the Naver app and select Real Estate



2) Select Location

Choose Busan Metropolitan City

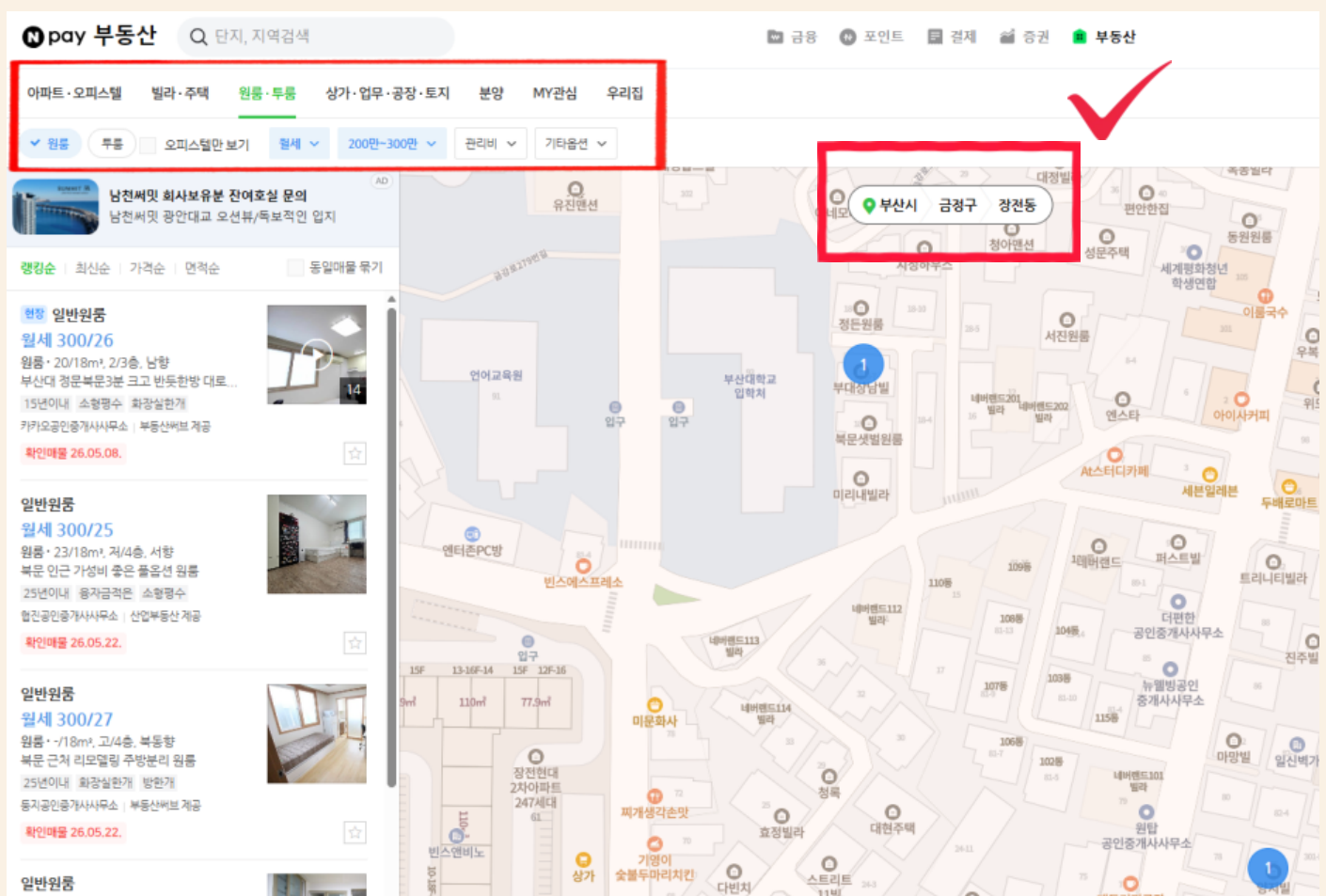
Set nearby areas such as Geumjeong-gu or Dongnae-gu etc.

3) Set Search Conditions

- * Type: Monthly rent
- * Set budget range (deposit and rent)
- * Housing type: Studio(one-room), officetel, etc.

4) Check Agency Information

- * Review the licensed real estate agency's information on each listing
- * It is recommended to compare multiple listings before contacting agents



[\(click\) Link for Naver Real Estate](#)

The external housing agencies and websites included in this material are provided solely for information and reference and are not affiliated or partnered with the university. Off-campus housing contracts are entered into voluntarily at the student's own discretion and responsibility, and the university is not responsible for the contract process or any disputes, damages, or losses arising from it.

외부 숙소 안내 가이드 OFF-CAMPUS HOUSING

A STEP-BY-STEP GUIDE FOR ARRANGING
OFF-CAMPUS HOUSING



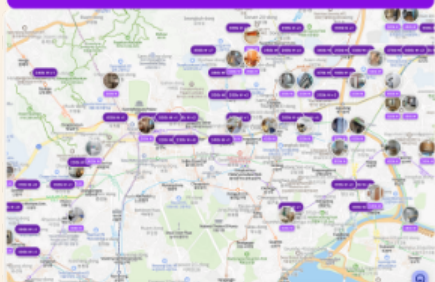
DiverCity House

(CLICK) <https://divercityhouse.com/>

01 회사 소개

DivercityHouse works with 26 globally certified real estate agencies in the Seoul and Busan areas through co-brokerage partnerships, connecting customers with accommodations such as one-room apartments, studios, villas, officetels, and apartments.

Search | 검색



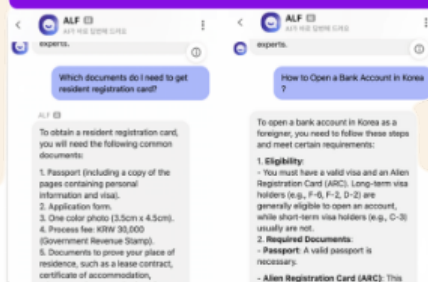
무보증금 매물 지도 & 사전 검증 :
보증금 장벽을 없애고, 사전 매물 영상으로
매물의 확산 및 신뢰성

Contract | 계약



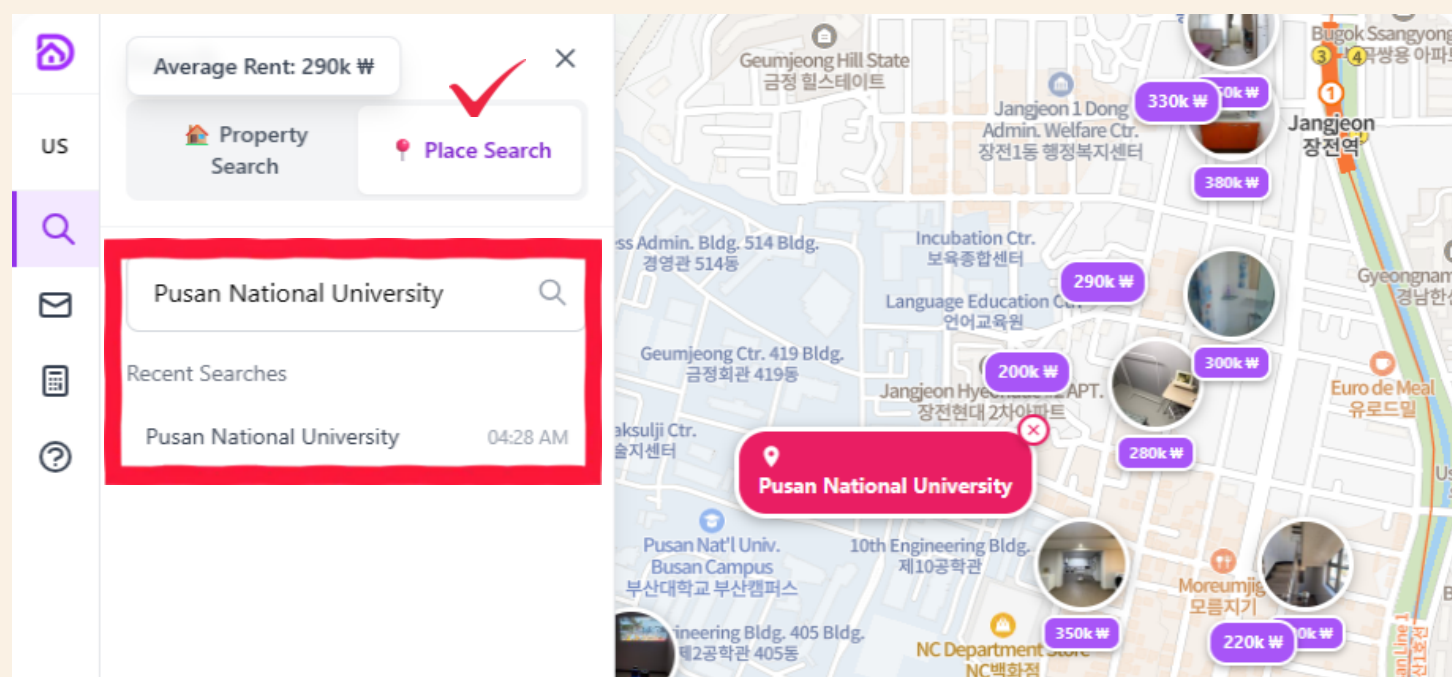
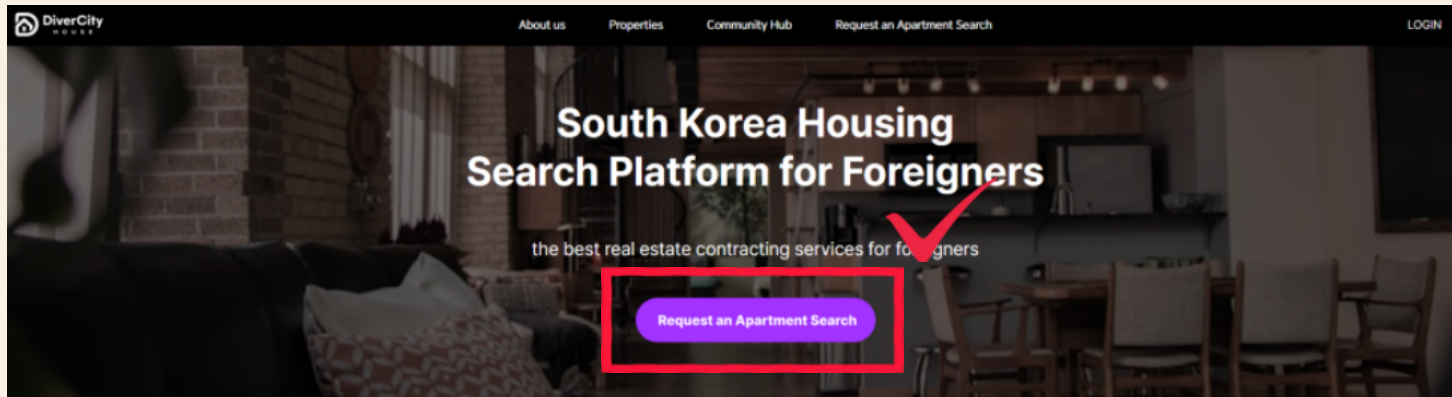
외국인 특화 결제 & 계약 통역 :
해외 카드 결제 지원 및 글로벌 공인중개사
협업을 통한 안전한 계약

Life | 정착



AI 컨시어지 & K-Life 정착 지원 :
24시간 행정 상담(AI)과 생활 필수품 공급
으로 파트너사의 관리 업무 제로화

* This content is provided for service understanding purposes only.



[Contact Info]

Name: DiverCity House

Email: contact@divercityhouse.com

Address: 63-1, Geumjeong-ro, Geumjeong-gu, Busan

Website: <https://www.divercityhouse.com>



The external housing agencies and websites included in this material are provided solely for information and reference and are not affiliated or partnered with the university. Off-campus housing contracts are entered into voluntarily at the student's own discretion and responsibility, and the university is not responsible for the contract process or any disputes, damages, or losses arising from it.

외부 숙소 안내 가이드 OFF-CAMPUS HOUSING

A STEP-BY-STEP GUIDE FOR ARRANGING
OFF-CAMPUS HOUSING



Plott Life

(CLICK) <https://life.plott.co.kr/>

01 회사 소개

Plott Life provides short-term rental services for international students, global business travelers, and long-term tourists staying in Korea. Contracts for short stays, such as 1 or 3 months, can be arranged as easily as booking a hotel.

03

다국어 24/7 상담

입주 전부터 퇴실까지,
24시간 365일 다국어 실시간 상담을 지원합니다.

- 중국·베트남·영어 등 7개 국어 지원
- 24시간 365일 운영
- 위챗·질로 등 다채널 상담 지원
- 입주 초기 생활정보 다국어 안내

(Operating a global customer support center available 24/7 in 7 languages)

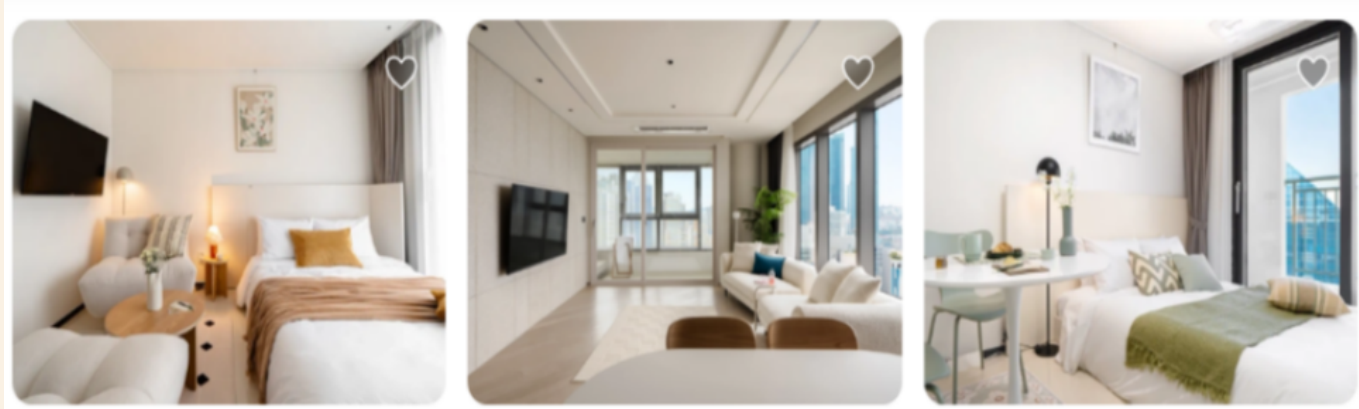
01

원하는 기간만큼 자유롭게

보증금 0원 부터, 학기·방학 일정에 따라 자유롭게
7일, 11일, 34일... 원하는 기간으로 계약이 가능합니다.

- 보증금 0원 부터 선택 가능
- 7일 이상부터 계약 가능
- Plott LIFE 직영 안심 매물
- 전용 보험 기본 적용 (준비중)

* 본 소개글 및 이미지는 특정 업체의 홍보를 위한 이미지가 아닌 제공 서비스 관련 이해를 돕기 위한 자료입니다.



[Contact Info]

Name: Handys

Email: life@plott.co.kr

Contact: 070-8655-2957

Address: 327, Gangnam-daero, Seocho-gu, Seoul

Website: <https://life.plott.co.kr/>

plott LIFE

The external housing agencies and websites included in this material are provided solely for information and reference and are not affiliated or partnered with the university. Off-campus housing contracts are entered into voluntarily at the student's own discretion and responsibility, and the university is not responsible for the contract process or any disputes, damages, or losses arising from it.



외부 숙소 안내 가이드

OFF-CAMPUS HOUSING

A STEP-BY-STEP GUIDE FOR ARRANGING
OFF-CAMPUS HOUSING



Other Platforms

Other platforms frequently used by local students



(CLICK) <https://www.zigbang.com/home/oneroom/map>



(CLICK) <https://www.dabangapp.com>



(CLICK) <https://www.airbnb.co.kr>



* Developing Platform for the Intl' Student Housing
(Link will be shared later)



The external housing agencies and websites included in this material are provided solely for information and reference and are not affiliated or partnered with the university. Off-campus housing contracts are entered into voluntarily at the student's own discretion and responsibility, and the university is not responsible for the contract process or any disputes, damages, or losses arising from it.